

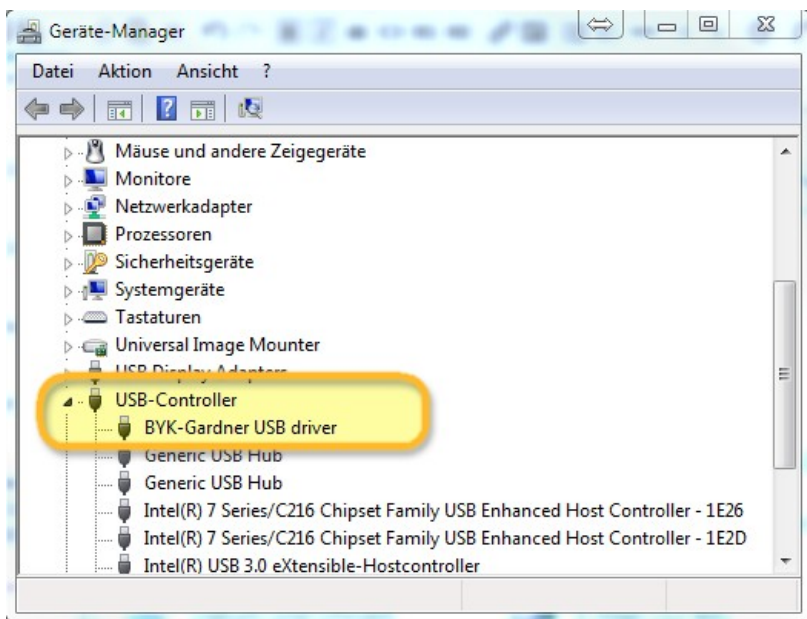
Connection guide GENIUS iQ 2

Important hints

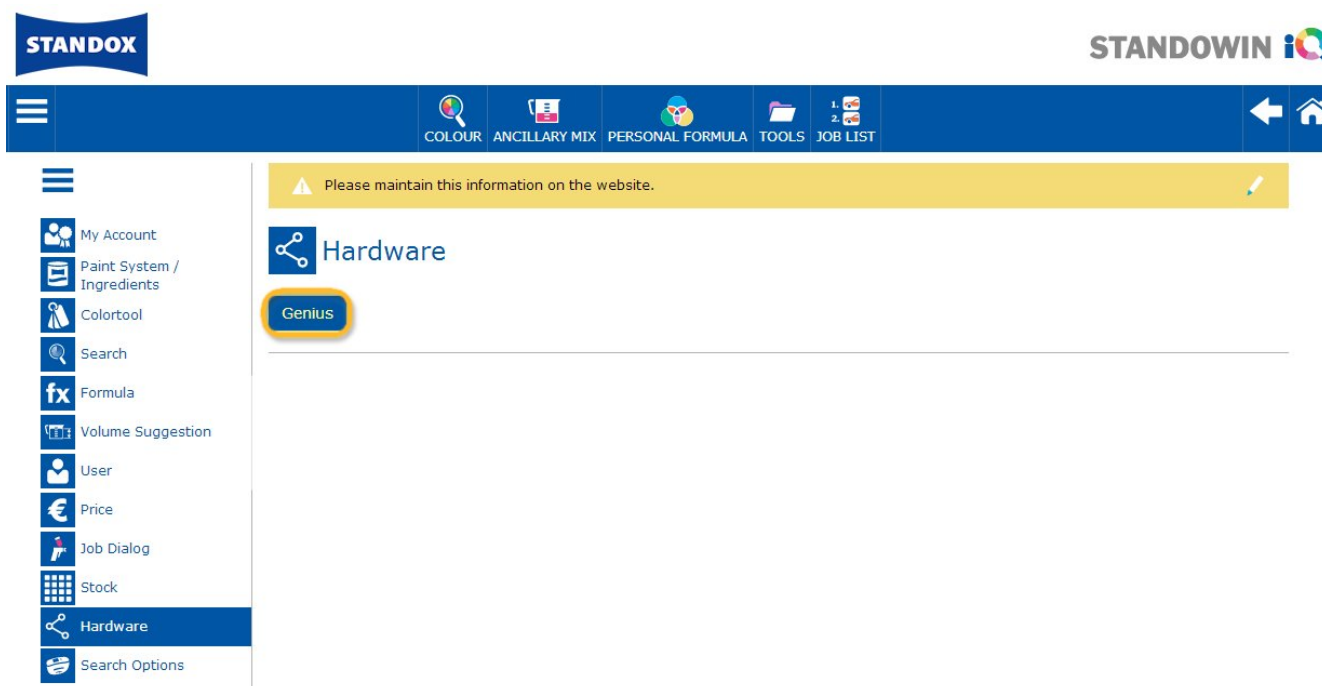
The new GENIUS iQ 2 devices is delivered to you with inactive WiFi connection. The reason for inactivity of WiFi is the required license for using WiFi in different countries. To activate WiFi, please start the locally installed Standwin IQ™ and follow the description below.

Connection configuration GENIUS iQ 2 to local Standwin IQ™ using cable.

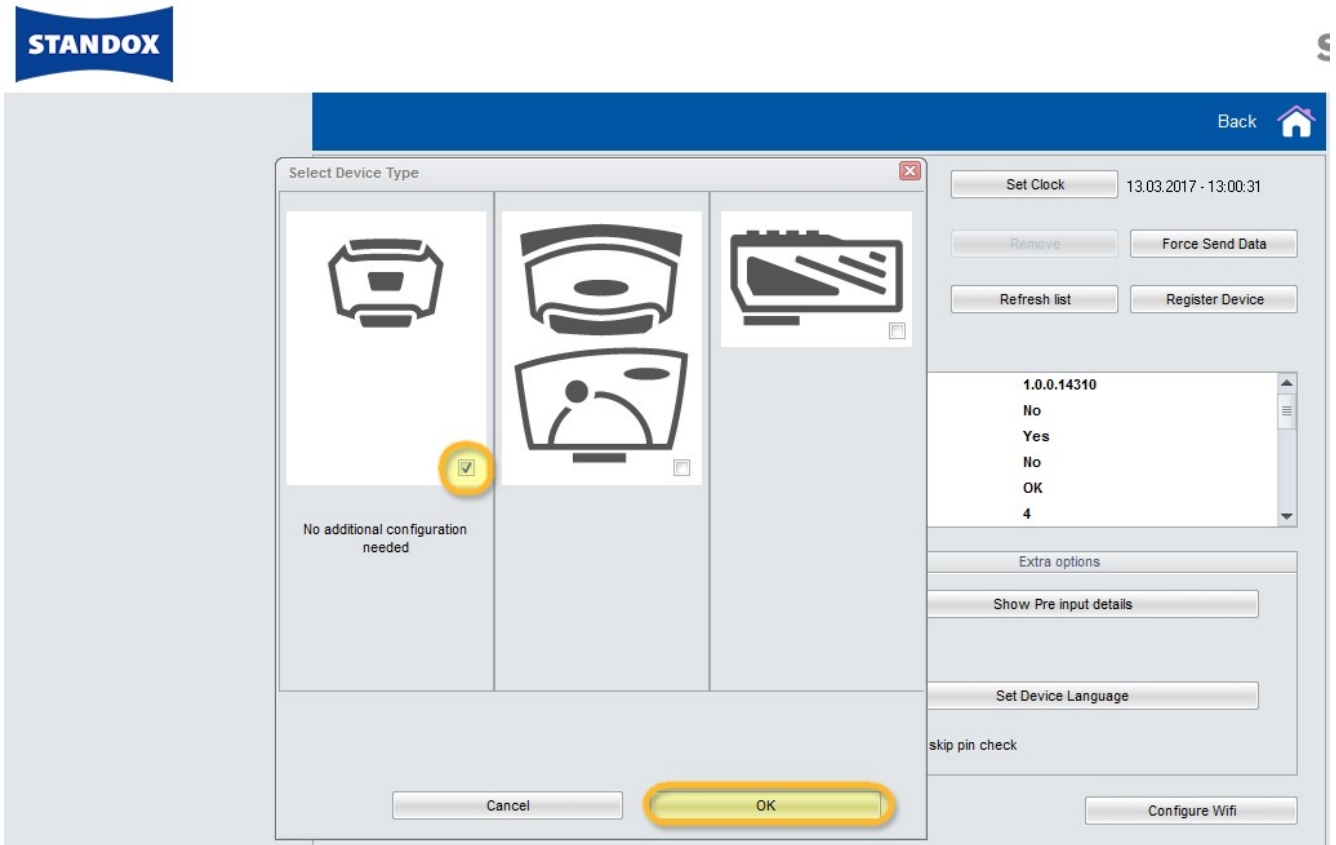
1. Connect the GENIUS iQ 2 to your PC via USB cable or using the docking station.
2. Install the driver and check in the device manager in USB-Controller the "BYK-Gardner USB driver".



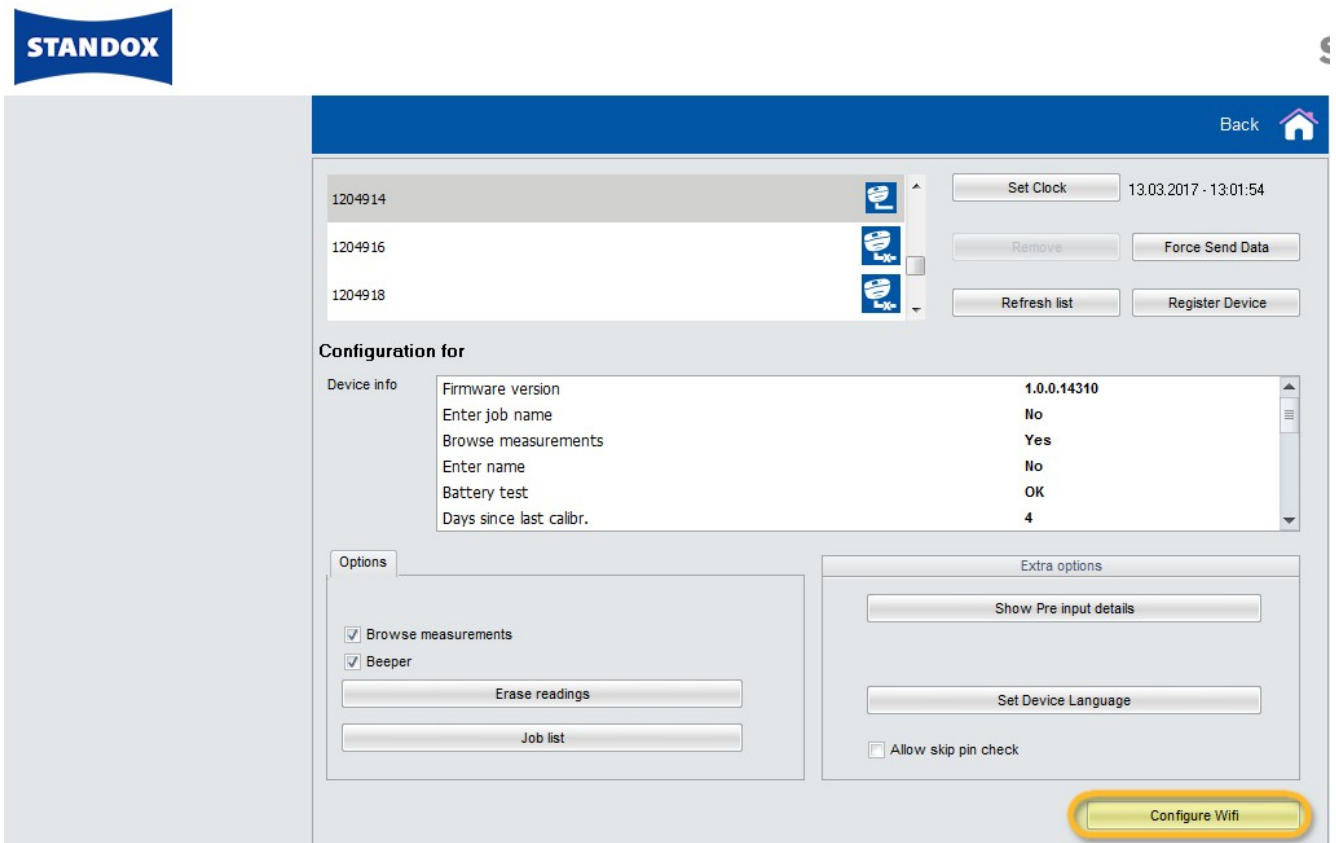
3. Go to "Settings/Hardware" and click the button GENIUS.



4. Click the button "Register Device", choose the device (left column) and "OK".

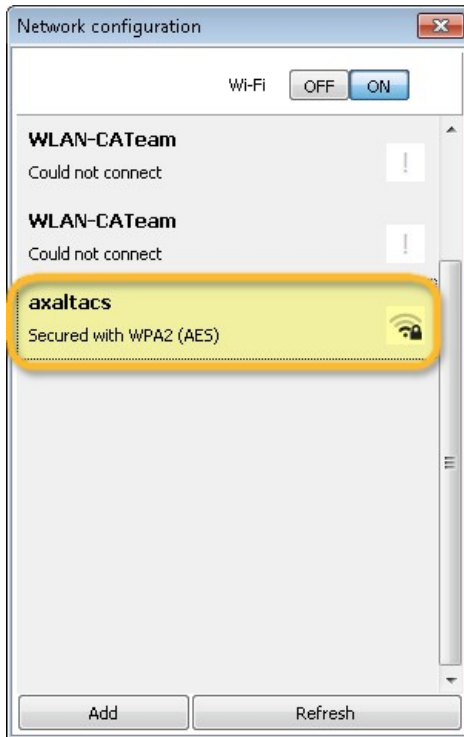


5. The new GENIUS iQ 2 is now connected via cable. Click now the button "Configure WiFi" to configure the WiFi connection.

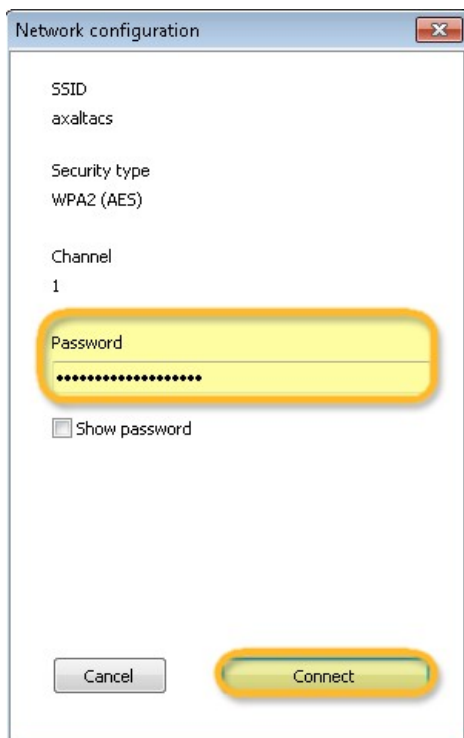


The button "Configure WiFi" is not available if the license for using WiFi doesn't exist for your country.

6. Click the button "ON" to activate WiFi.
7. Double click the SSID of your network.



8. Fill in the network key (Password) and click "Connect".



9. Now the GENIUS iQ 2 is connected to your WiFi network.



Connection configuration GENIUS iQ 2 to your WiFi.

If the WiFi is active, you can configure the WiFi connection manually on the device itself.

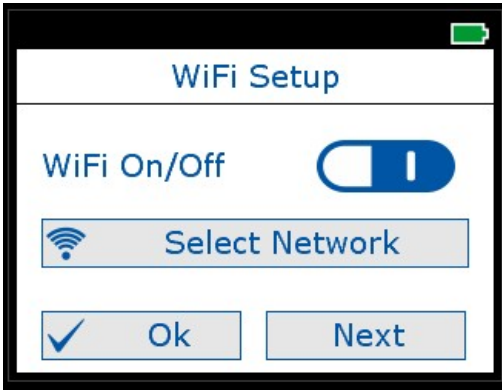
1. Switch on the GENIUS iQ 2.
2. Click the "Setup" icon (header line).



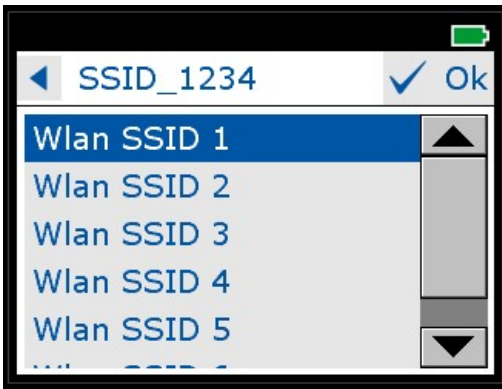
3. Click the icon "WiFi".



4. Click "Select Network".



5. Choose the SSID of your WLAN and click OK.

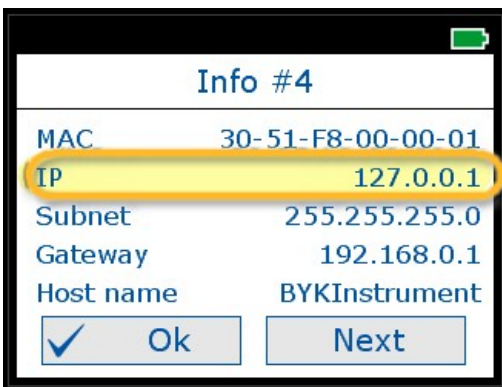


6. Fill in your WiFi access key and click OK.



7. The GENIUS iQ 2 shows a message to confirm the successful connection to WiFi.

8. Click now the icon "Information" and with "Next" browse to the 4th. page and check the GENIUS iQ 2 IP number.



Connection configuration GENIUS iQ 2 to online Standown IQ™.

This configuration can be used for connecting to tablets or mobile phones.

1. Start Standown IQ™ in a browser and log in to your company account.
2. Go to "Settings/Hardware" and click the "+" sign.
3. Enter the name of your GENIUS iQ 2 (without blanks) and the "IP address" as described in 8 (see above).

Connection	Name	Ip address	Manufacturer	Model	Serial		
	TEST_WIFI	10.35.3.55	BYK	7134	1204918	+	🗑️

Connection	Name	Ip address	Manufacturer	Model	Serial		
	New IpScale	123456789					🗑️

4. If the connection was successful the Model and Serial number of the GENIUS iQ 2 will be shown.

Important hints

1. Before you start connection configuration, please check if your GENIUS iQ 2 and the PC/Tablet/Smartphone are in the same WiFi area.
2. Please be patient at transfer of first measurements.

Connection configuration GENIUS iQ 2 to local Standown IQ™ using WiFi.

One additional option for configuring the local Standown IQ™ with GENIUS iQ 2 without cable.

1. Please follow the procedure in "Connection configuration GENIUS iQ 2 to your WiFi" and the configuration like in online Standown IQ™.
2. If the local Standown IQ™ is connected to the online Standown IQ™, the GENIUS iQ 2 will be visible online, too.